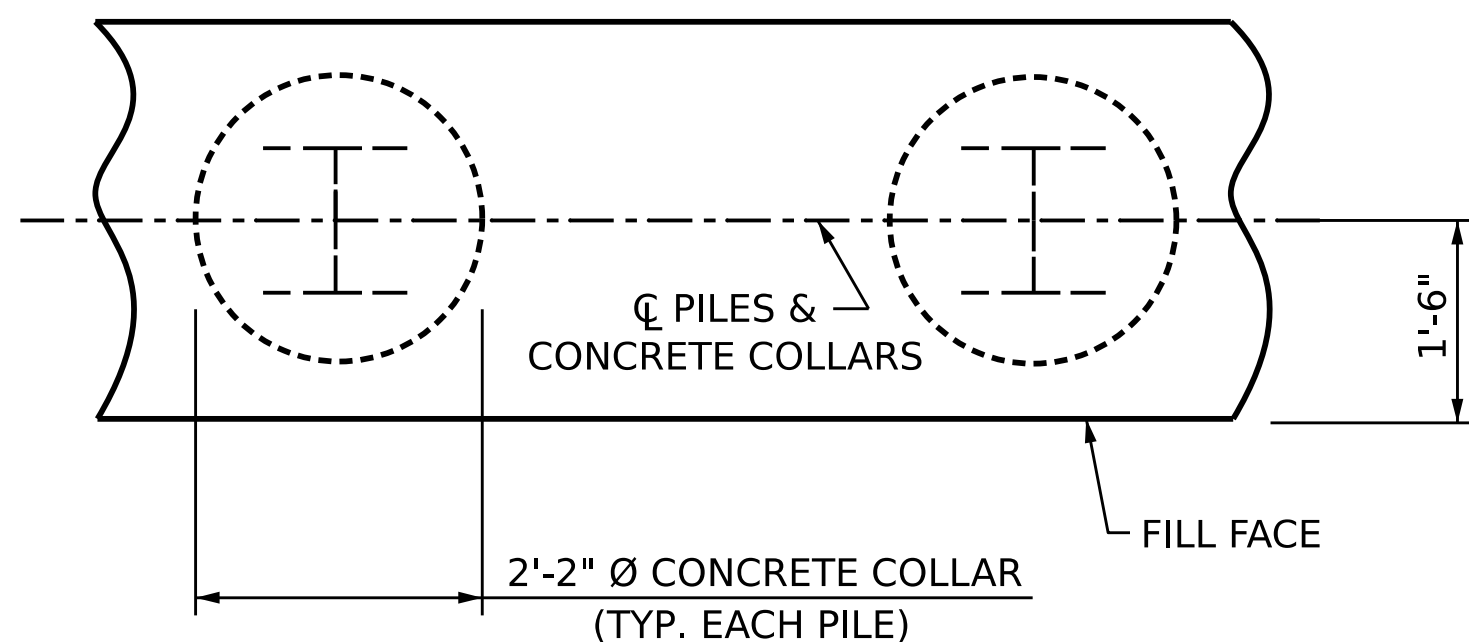
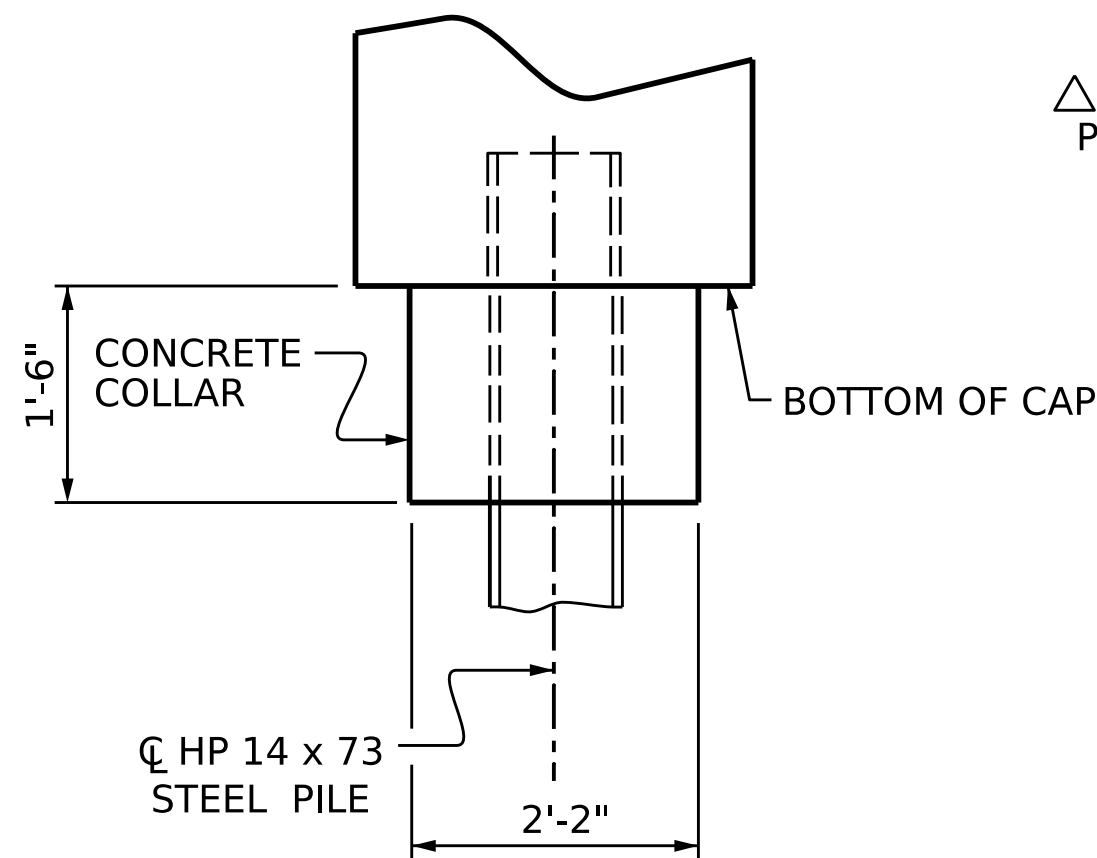


SECTION A-A

(CONCRETE COLLAR NOT SHOWN FOR CLARITY.
SEE "CORROSION PROTECTION FOR STEEL PILES DETAIL.")

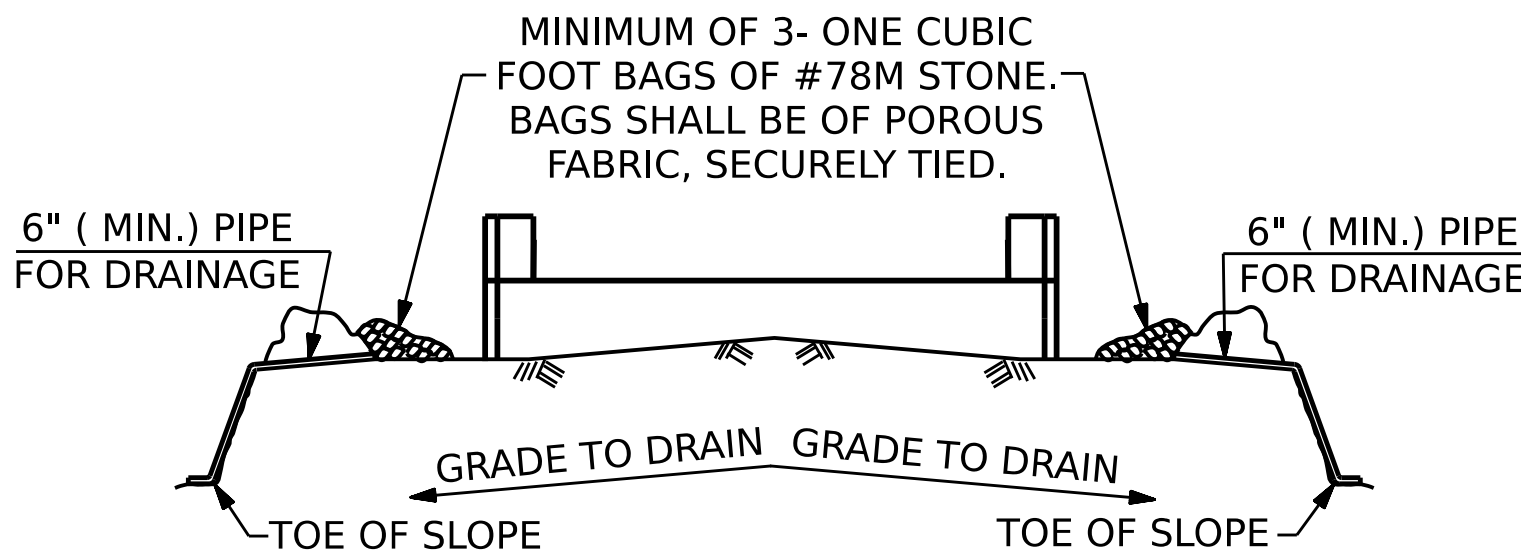


PLAN



ELEVATION

CORROSION PROTECTION FOR STEEL PILES DETAIL

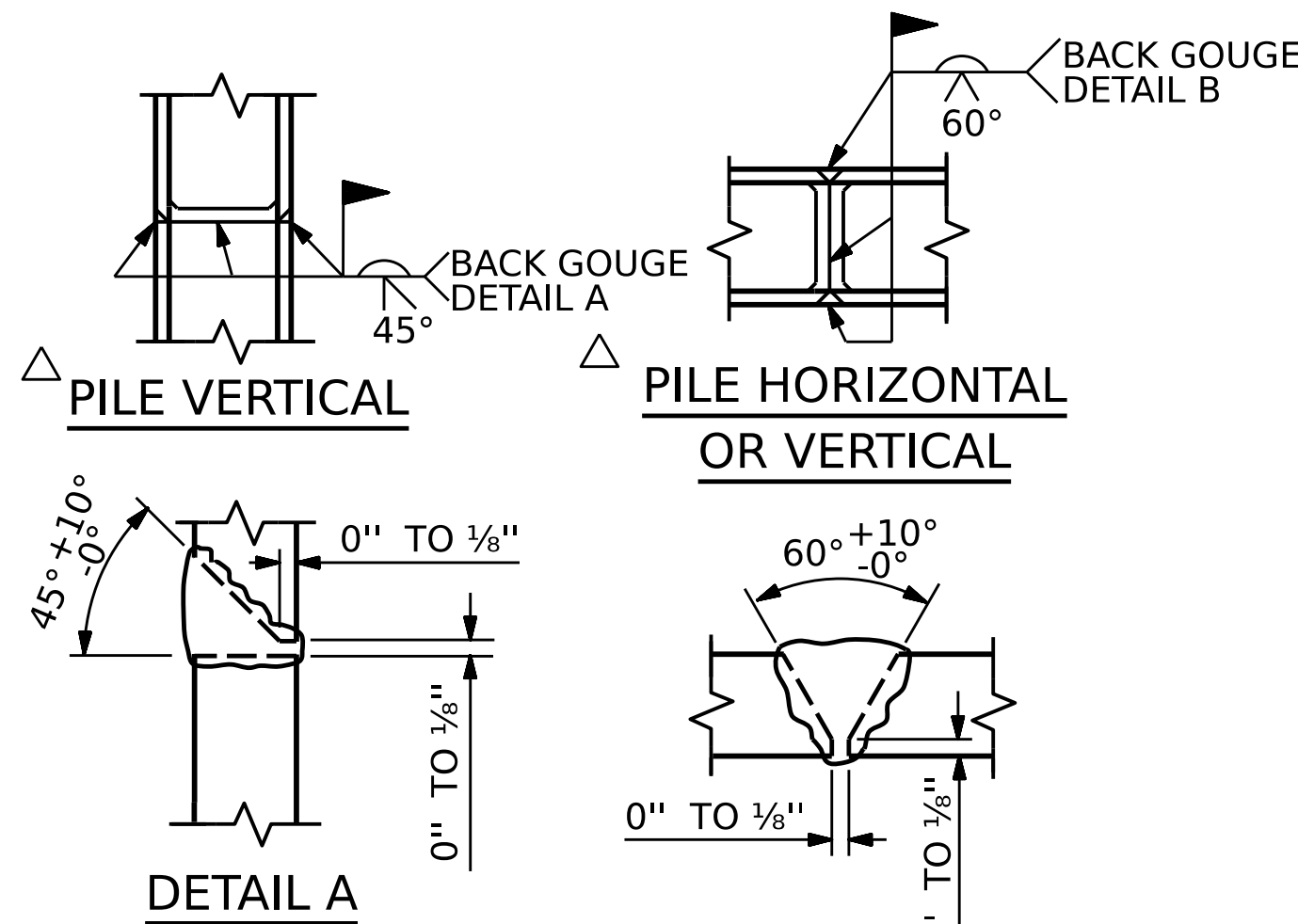


BAGGED STONE AND PIPE SHALL BE PLACED IMMEDIATELY AFTER COMPLETION OF END BENT EXCAVATION. PIPE MAY BE EITHER CONCRETE, CORRUGATED STEEL, CORRUGATED ALUMINUM ALLOY, OR CORRUGATED PLASTIC. PERFORATED PIPE WILL NOT BE ALLOWED.

BAGGED STONE SHALL REMAIN IN PLACE UNTIL THE ENGINEER DIRECTS THAT IT BE REMOVED. THE CONTRACTOR SHALL REMOVE AND DISPOSE OF SILT ACCUMULATIONS AT BAGGED STONE WHEN SO DIRECTED BY THE ENGINEER. BAGS SHALL BE REMOVED AND REPLACED WHENEVER THE ENGINEER DETERMINES THAT THEY HAVE DETERIORATED AND LOST THEIR EFFECTIVENESS.

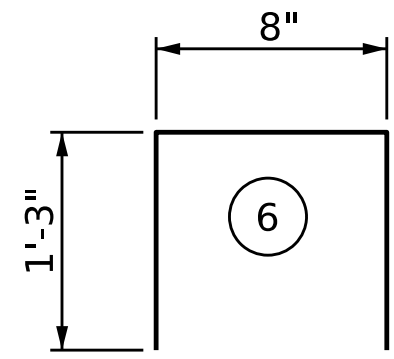
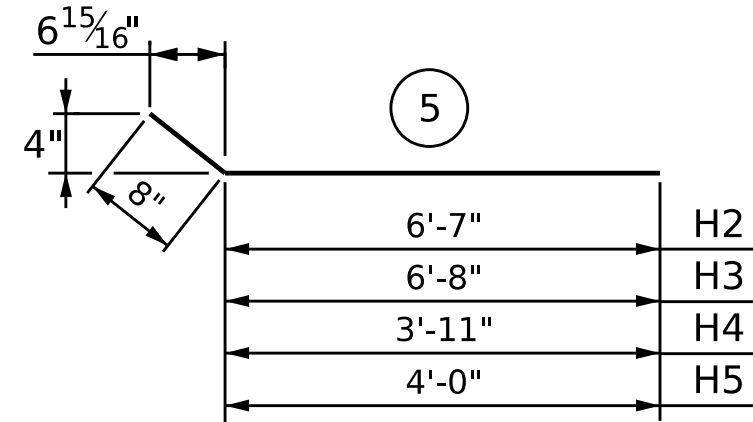
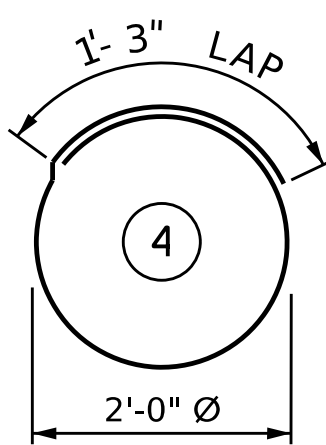
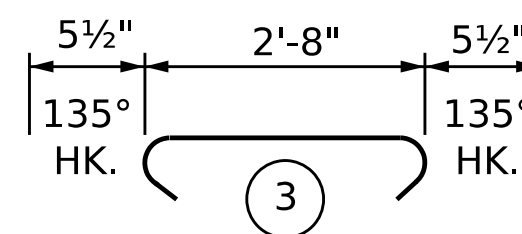
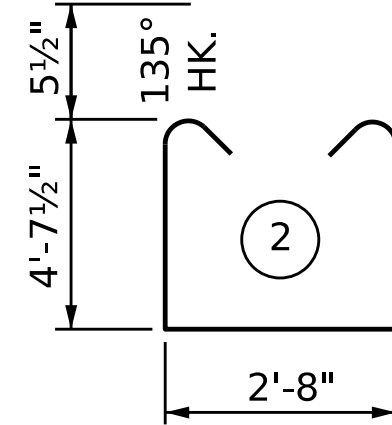
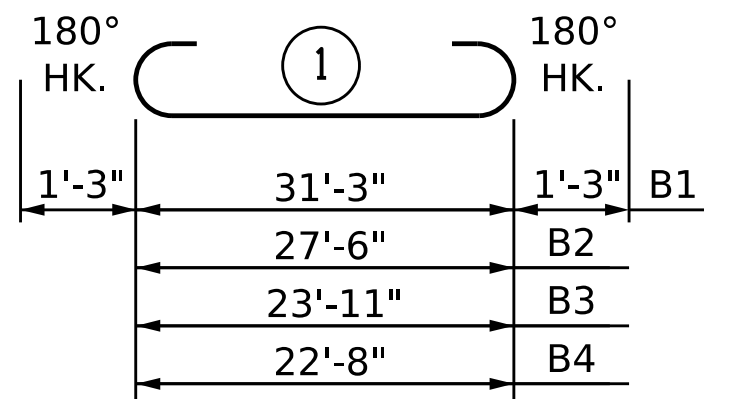
NO SEPARATE PAYMENT WILL BE MADE FOR THIS WORK AND THE ENTIRE COST OF THIS WORK SHALL BE INCLUDED IN THE UNIT CONTRACT PRICE BID FOR THE SEVERAL PAY ITEMS.

TEMPORARY DRAINAGE AT END BENT



PILE SPLICE DETAILS

BAR TYPES



ALL BAR DIMENSIONS ARE OUT TO OUT

BILL OF MATERIAL

END BENT 1

BAR	NO.	SIZE	TYPE	LENGTH	WEIGHT
B1	2	#9	1	33'-9"	230
B2	2	#9	1	30'-0"	204
B3	2	#9	1	26'-5"	180
B4	2	#9	1	25'-2"	171
B5	7	#5	STR.	31'-3"	228
B6	7	#5	STR.	22'-8"	165
B7	4	#4	STR.	23'-11"	64
B8	7	#4	STR.	2'-8"	12
H1	36	#4	STR.	10'-3"	246
H2	4	#4	5	7'-3"	19
H3	4	#4	5	7'-4"	20
H4	1	#4	5	4'-7"	3
H5	1	#4	5	4'-8"	3
H6	2	#4	STR.	6'-11"	9
K1	6	#4	STR.	29'-4"	118
S1	26	#5	2	12'-10"	348
S2	26	#5	3	3'-7"	97
S3	20	#4	4	7'-7"	101
S4	30	#4	6	3'-2"	63
V1	74	#4	STR.	6'-4"	313
V2	2	#4	STR.	6'-1"	8
V3	2	#4	STR.	5'-11"	8
V4	2	#4	STR.	5'-9"	8
V5	2	#4	STR.	5'-7"	7
V6	2	#4	STR.	5'-5"	7
V7	2	#4	STR.	5'-3"	7
V8	2	#4	STR.	5'-1"	7

REINFORCING STEEL				
TOTAL				2,646 LBS.

CLASS A CONCRETE				
POUR #1 (CAP, LOWER PART OF WINGS & COLLARS)				19.0 CU. YDS.
POUR #2 (UPPER PART OF WINGS AND BACKWALL)				2.4 CU. YDS.
TOTAL				21.4 CU. YDS.

PROJECT NO.: 18314.1044073

HAYWOOD COUNTY

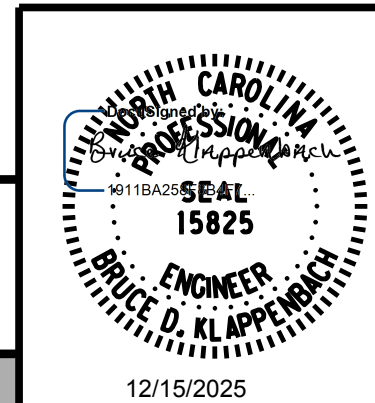
STATION: 12+13.00 -L-

SHEET 3 OF 3

STATE OF NORTH CAROLINA
DEPARTMENT OF TRANSPORTATION
RALEIGH

SUBSTRUCTURE
END BENT 1
DETAILS AND
BILL OF MATERIAL

REVISIONS				SHEET NO.
NO.	BY:	DATE:	NO.	
1			3	S-15
2			4	TOTAL SHEETS 21



DOCUMENT NOT CONSIDERED FINAL
UNLESS ALL SIGNATURES COMPLETED